



## ICR4Inventory

The following is a description of the CR4WEB Web Service Test Application. It looks at the inventory section of the Web Services as defined by ICR4Inventory.

The web service calls are highlighted in **Bold** in the following text.

The purpose of this document is to help bridge the understanding on where the data is entered in ClubRunner to make it appear in the web service.

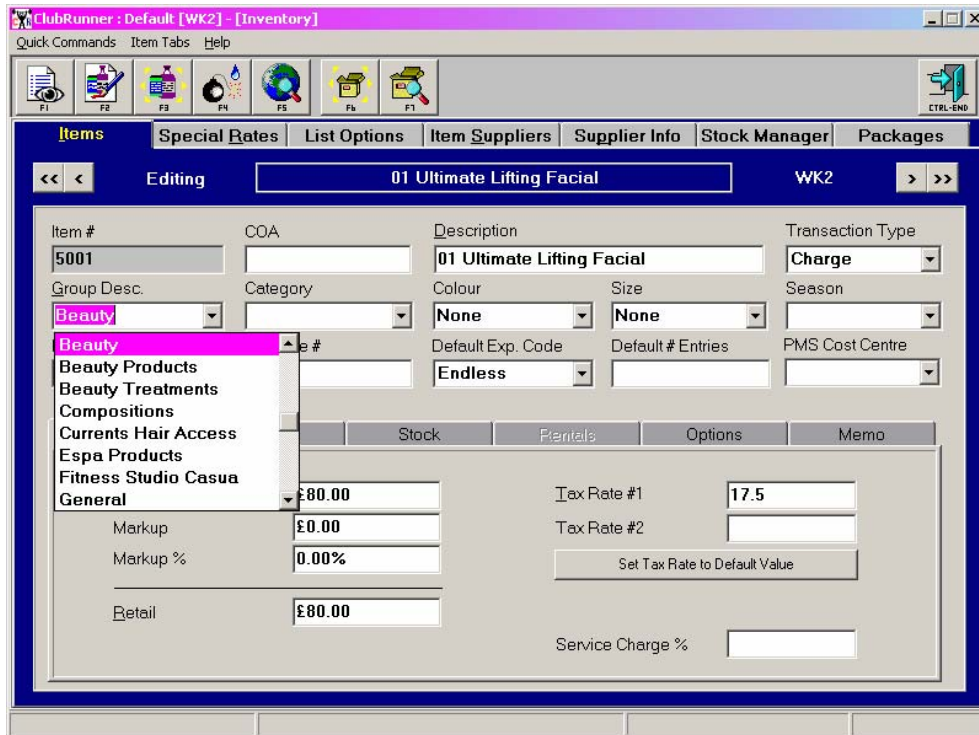
You will find the Inventory lists on the right side of the screen.

### GetItemGroups

Click **GetListOfItemGroups** to see a list of all item Groups for club. Item Groups are used to filter transaction reports into different categories.

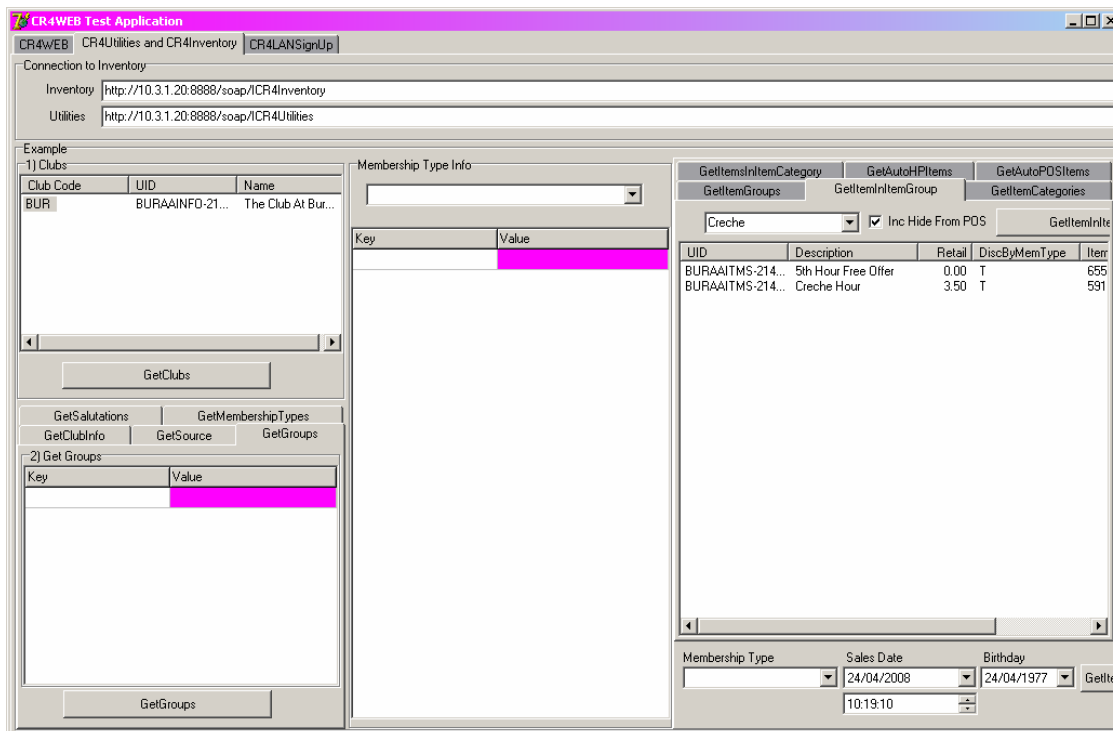
The screenshot shows the CR4WEB Test Application interface. The main window displays the connection to the ICR4Inventory web service. The 'Inventory' field is set to `http://10.3.1.20:8888/soap/ICR4Inventory` and the 'Utilities' field is set to `http://10.3.1.20:8888/soap/ICR4Utilities`. The 'Example' section shows a table of clubs with columns 'Club Code', 'UID', and 'Name'. The first row is 'BUR', 'BURAAINFO-21...', and 'The Club At Bur...'. Below this is a 'GetClubs' button. The 'Membership Type Info' section has a dropdown menu. The 'GetItemGroups' section shows a table with columns 'Key' and 'Value'. The 'Key' column contains a list of item groups, and the 'Value' column is empty. The 'GetListOfItemGroups' button is highlighted. The 'Membership Type' dropdown is set to 'None', 'Sales Date' is '24/04/2008', and 'Birthday' is '24/04/1977'. The 'GetItemGroups' button is highlighted.

They are in the Inventory under field name Group Description.

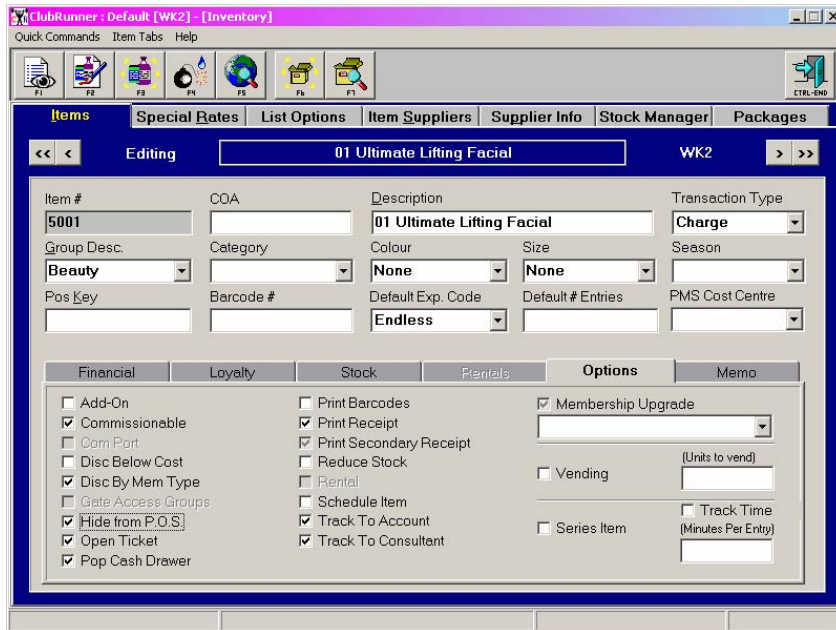


## GetItemInItemGroup

Select a Group from the drop down list and click on GetItemInItemGroup to see a list of all Inventory items tagged with the Group Description.

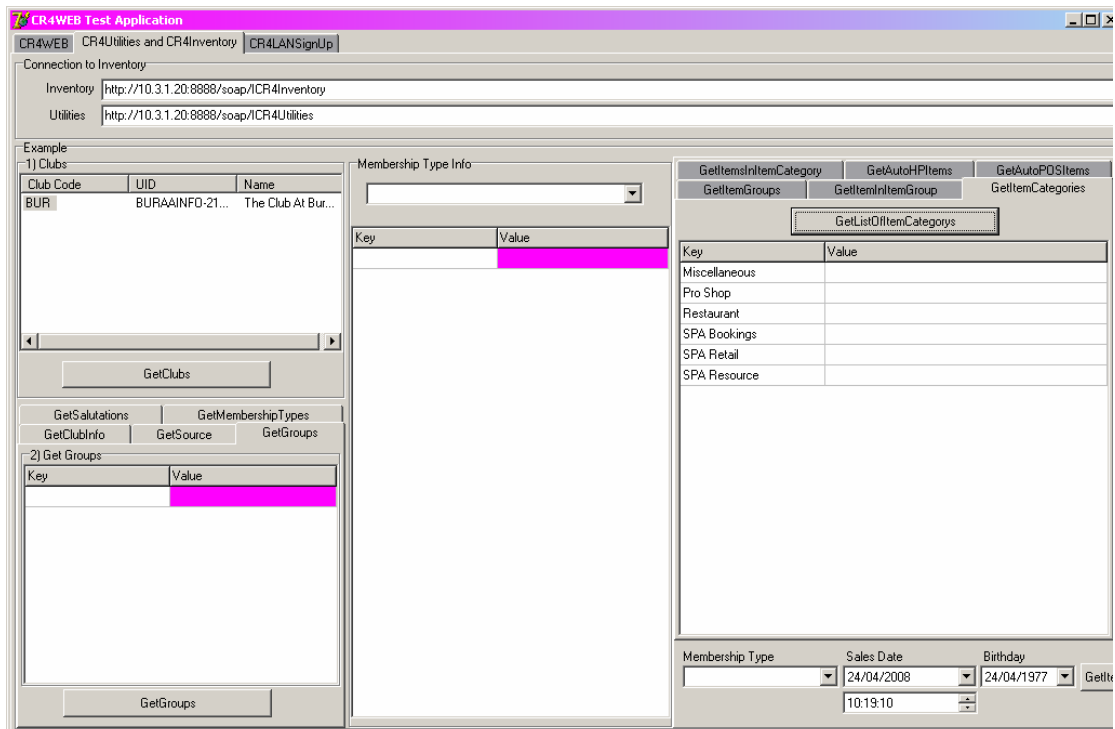


Put a tick in Inc Hide from POS to include any items that may have been tagged 'Hide from POS' in the Options tab in the Inventory.

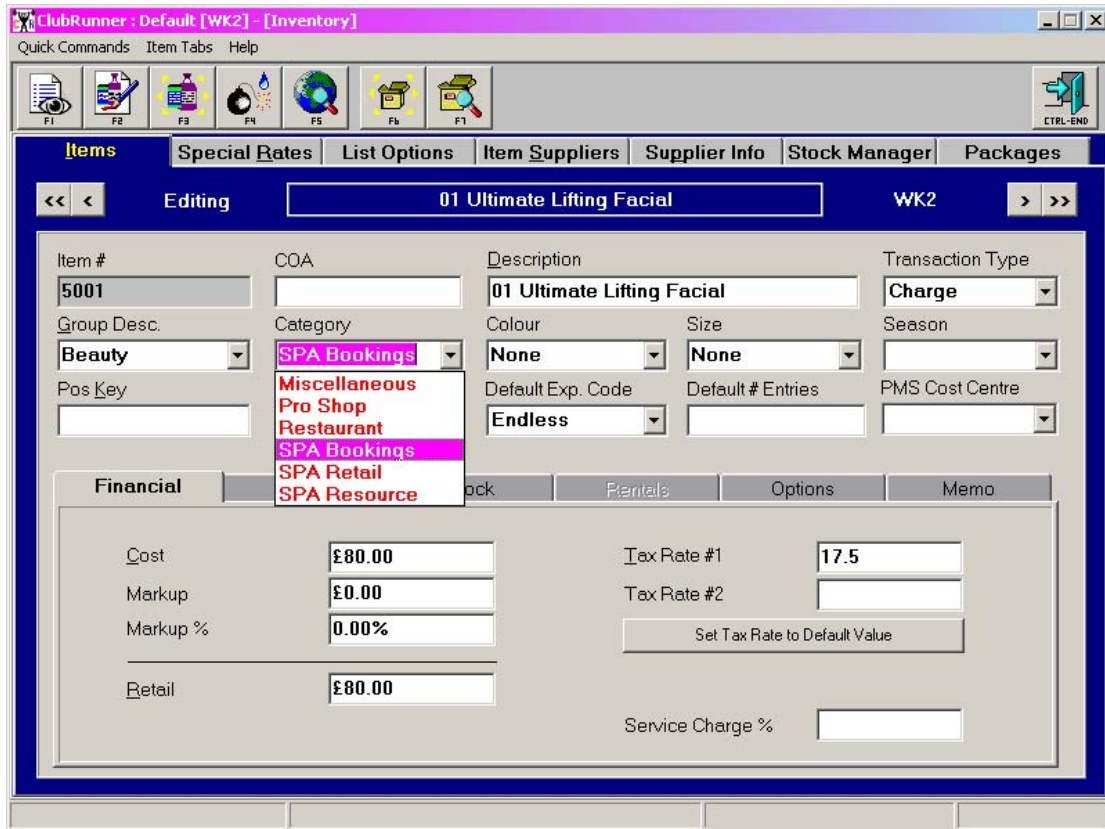


## GetItemCategories

Click on GetListofItemCategories button to see a list of Categories from the Inventory.

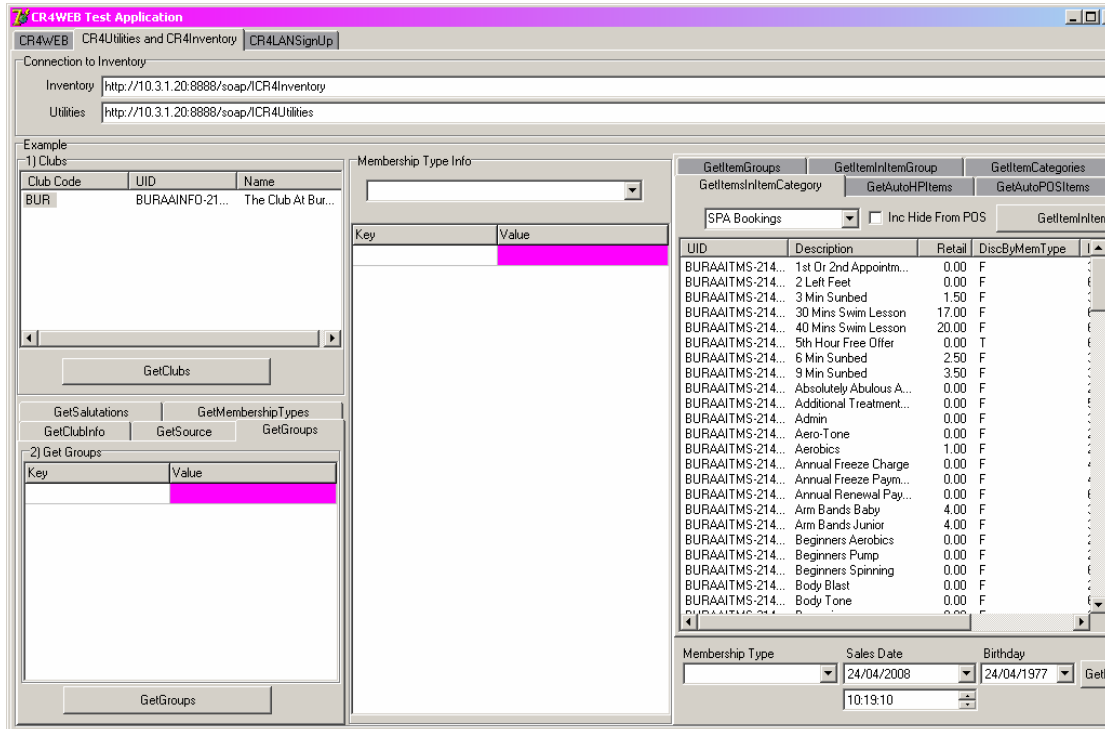


These are different filters that can be used for reporting purposes.



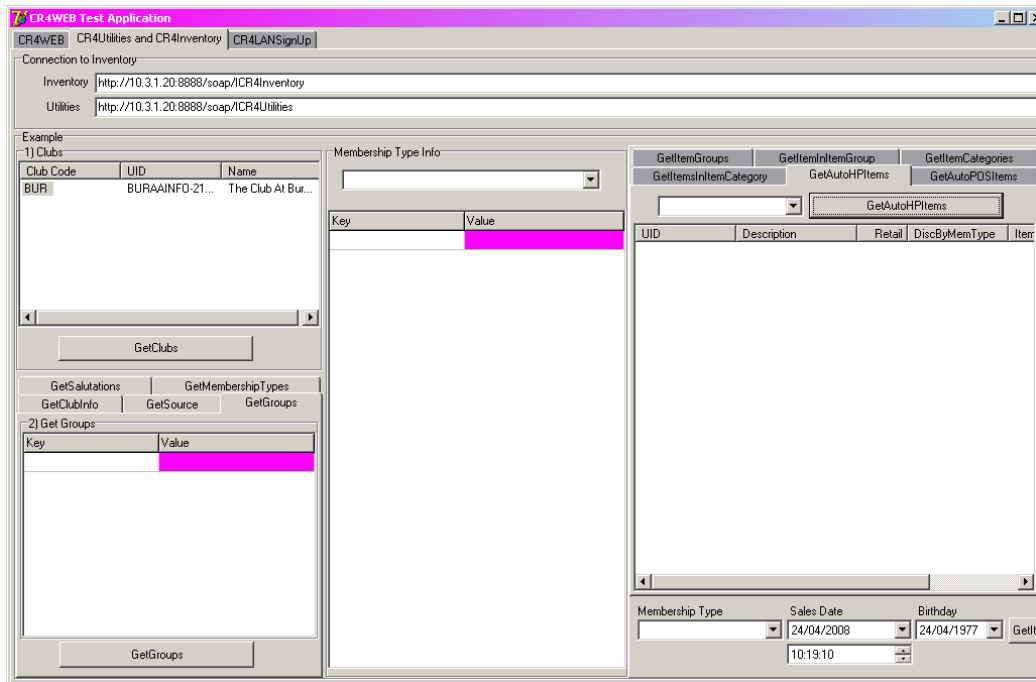
## GetItemsInItemCategory

Select a category from the dropdown list, then click on the GetItemsInItemCategory button to see a list of all inventory items tagged with that category.

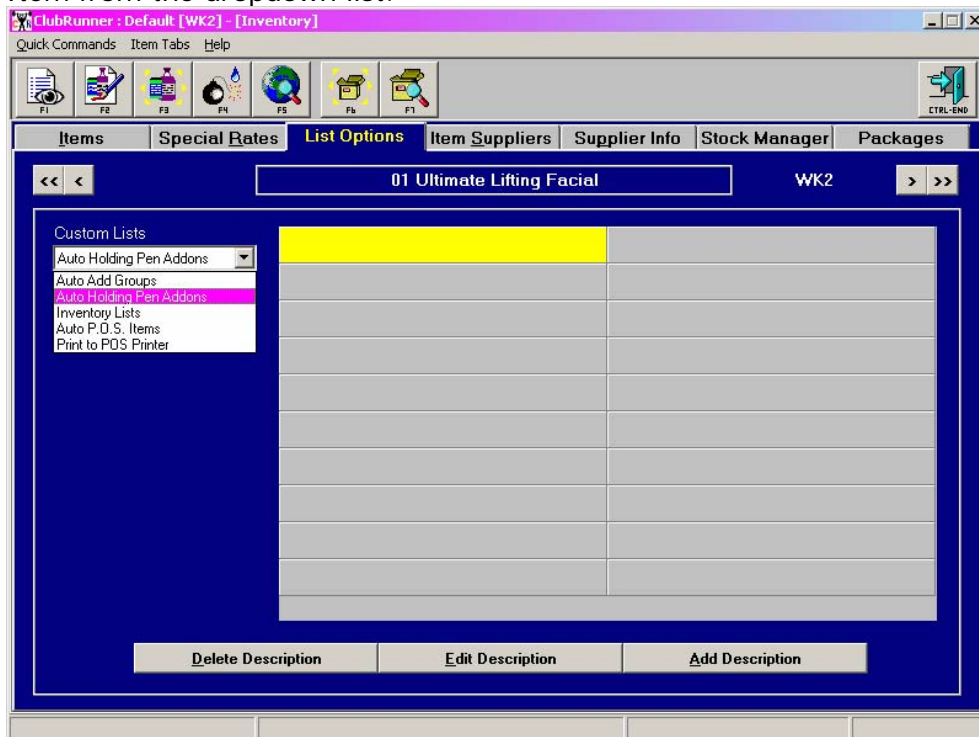


## GetAutoHPIItems

Click on the button to see a list of any items that will automatically come up to be sold when you add a new person to the Holding Pen.



This automated process is set up in the Inventory under the List Options tab. To add one, add or edit a specific Inventory item, go to List Options, Select Auto POS Item from the dropdown list.

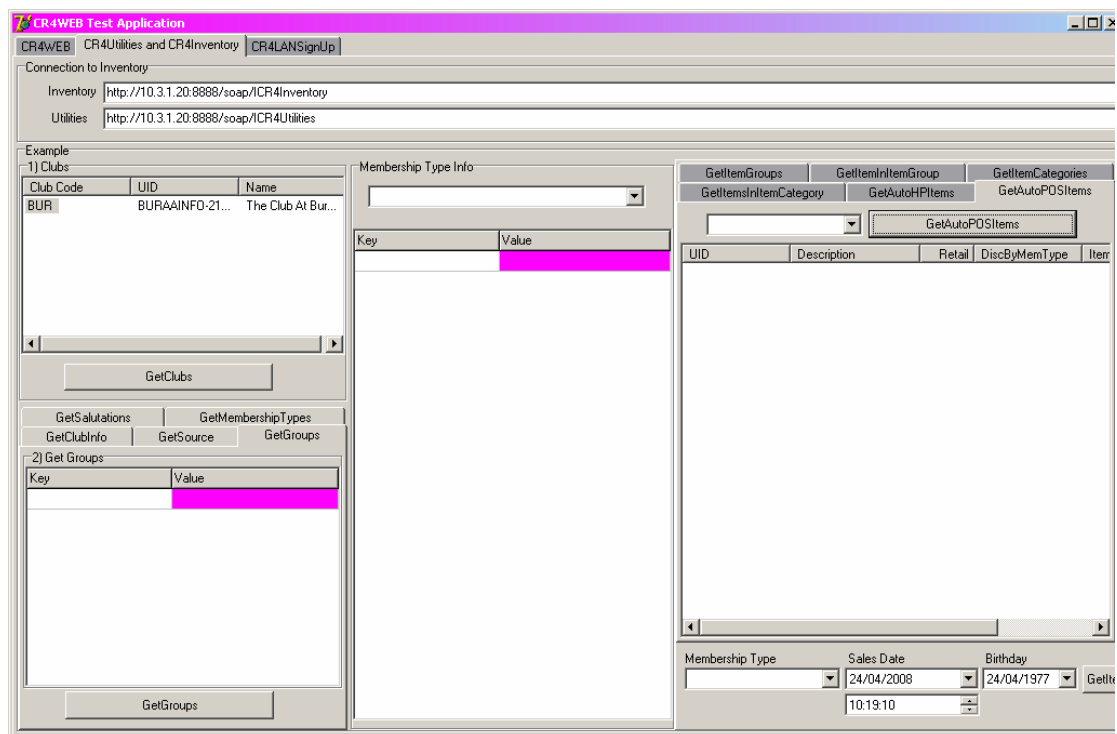


Click Add Description, then select membership type/types that charges will apply too.

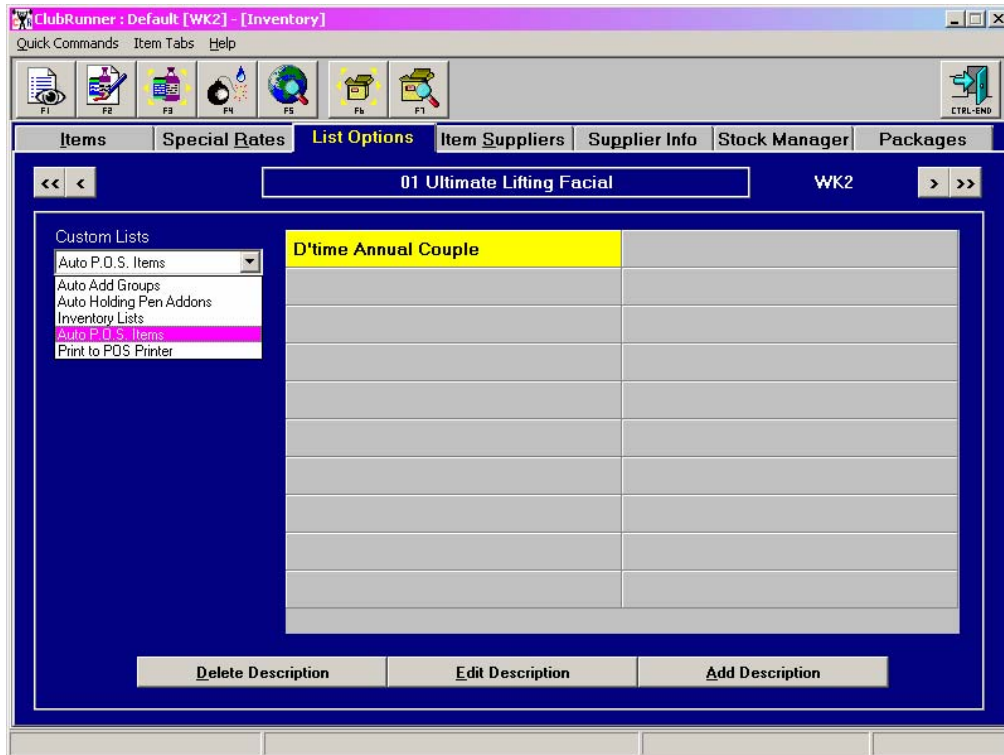


## GetAutoPOSItem

Click on button to see a list of any Auto POS Items. These are used to add a charge when a member swipes in.



To set these up for specific membership types, add or edit an Inventory item, click on the List Options tab and select Auto POS items from the dropdown list.



Click Add Description button and select membership type that the charge should apply too. This is commonly used for a casual membership type that members pay a fee each time they use the facilities.

